



Cement Swivel

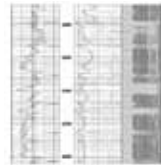
Cementing Solutions



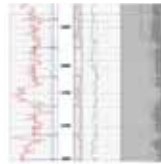
TESCO offers the complete cementing solution for today's high operationally efficient drilling rigs. TESCO's Cement Swivel is rigged up with the casing running equipment between the top drive and the automated casing running tool. This combination of equipment allows you to immediately transition to cementing once the casing string has been landed; moreover, it enables the casing to be rotated and reciprocated while cementing which has proven to significantly improve cement bond and well integrity.

Cement Bond Evaluation

9-5/8 inch Casing in Vertical Wellbore

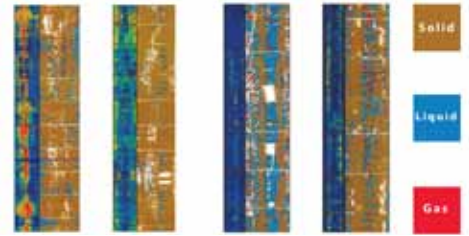


No Casing Movement while Cementing



Casing Reciprocated while Cementing

5-1/2 inch Casing in Horizontal Wellbore



Cement Not Rotated

Cement Rotated

Foam Not Rotated

Foam Rotated

Technical Specifications

Load Rating:	600 ton
Working Pressure Rating:	5,000 psi at 50 rpm
Swivel Body Length:	30 inches
Swivel Body Diameter:	15-1/2 inches
Connections:	6-5/8 API Regular Pin X Box
Inner Diameter:	2.-1/2 inches
Entry Port Size:	4 inch Figure 1002 Hammer Union
Maximum Ball Size:	2 inches
Maximum Flowrate: (through complete system)	2,500 gpm at 5,000 psi

Casing Diameter (inches)	System Pressure Rating (psi)
4-1/2 to 7	5,000
7-5/8	4,200
8-5/8	3,500
9-5/8	3,750
10-3/4	3,000
11-3/4	2,500
13-3/8	2,000



CEMENT SWIVEL