

Texas International



Oilfield Tools, LTD



Instruction and Information Manual

Pipe Clamp

Document Number

OM026

REV	B	11/12/2021
------------	----------	-------------------

©2005-2021 Texas International Oilfield Tools, LTD
Published by Texas International Oilfield Tools, LTD
3035 Eastveld Dr. Houston, Texas 77073

www.TEXASINTERNATIONAL.com

CONFIDENTIALITY STATEMENT

This document contains confidential information. All rights including copyright, confidential information, trade secrets and design rights are owned by Texas International Oilfield Tools, LTD (TIOT, Texas International, and Texas International Oilfield Tools). No use or disclosure is to be made without prior written permission of Texas International Oilfield Tools, LTD. This manual is intended for the sole use of Texas International Oilfield Tools, LTD and is provided to customers for informational purposes only. Printed copies and electronic files saved outside TIOT's server are not controlled. Latest revision can be found at Q:\Approved Manuals.

TABLE OF CONTENTS

SAFETY	4
SAFETY (CONTINUED)	5
INTRODUCTION.....	6
SPECIFICATIONS	7
ASSEMBLY & DISASSEMBLY.....	8
STORAGE AND TRANSPORTATION	9
PARTS	10
DIMENSIONS.....	12
REFERENCE	14

SAFETY

READ THIS MANUAL BEFORE USING EQUIPMENT

Equipment supplied by Texas International Oilfield Tools is intended for installation and use in controlled environments involving hazardous operations and situations.

Only authorized and trained personnel shall install, maintain, operate and/or repair equipment supplied by Texas International Oilfield Tools, LTD. Equipment shall be used only for the purpose for which it is intended.

The User is responsible for ensuring the equipment is in safe working order prior to use. Texas International Oilfield Tools, LTD is not responsible for injuries or equipment damage that arises from equipment neglect or misuse.

The User is responsible for ensuring the safety of all personnel within the vicinity of the equipment. Texas International Oilfield Tools recommends a risk assessment be performed by qualified safety representatives prior to using equipment. All personnel shall possess and use Personal Protective Equipment (PPE) and must be trained at minimum on rig safety, rig procedures, and equipment operation.

Specific detailed instructions and information about shop practices or procedures, operation and service, and safety criteria are not included. Warnings, explanations, and information are provided herein to advise readers to take deliberate action to prevent damage to or failure of equipment and protect personnel from potential injury or lethal conditions. The information provided does not cover all possible hazards or consequences.

Hazard Labels Used in this Manual



DANGER is represented by this hazard symbol and signifies the highest level of risk. Failure to observe and heed this information may result in serious bodily injury or death.



WARNING is represented by this hazard symbol and signifies potential hazards of medium risk. Failure to observe and heed this information may result in significant bodily injury, catastrophic equipment failure, and/or environmental contamination.



CAUTION is represented by this hazard symbol and signifies potential hazards of low risk. Failure to observe and heed this information may result in bodily injury, equipment failure, and/or environmental contamination.



NOTICE symbol denotes items of importance unrelated to personal injury which highlight additional information provided to aid the user during installation, commissioning, operating, and/or maintaining equipment.

Please pay close attention to these advisories.

SAFETY (CONTINUED)



Do not lift over personnel. Do not stand near objects being lifted.



Never use clamps with damaged components.



Load ratings apply to zero degree lifting and do not account for side loading.



Inspect components for damage or wear before each use.



Only trained, knowledgeable personnel should perform assembly or disassembly of equipment.

INTRODUCTION

Texas International Oilfield Tools (TIOT) offers Pipe Clamps in numerous sizes, capacities, and configurations.



Keep this manual with the equipment at all times!



FIGURE 1

SPECIFICATIONS

TIOT Wireline Pipe Clamps are furnished with the following features:

- All steel construction.
- Load Rated Shackles and Hoist Rings.
- Load and MPI Testing and certification.

ASSEMBLY & DISASSEMBLY

Use appropriate tools and devices.

After positioning the Clamp in the working position, secure in place using a high-capacity pneumatic Torque Wrench like the example shown (Figure 2). Ensure that the Shackle is secured with a nut and cotter pin (Figure 3). Ensure that each Hoist Ring is installed and fastened according to the torque rating on the Hoist Ring.



FIGURE 2



FIGURE 3

STORAGE AND TRANSPORTATION

- Unpainted surfaces should be coated with a rust preventing agent.
- Prevent exposure to water and moisture.
- Clean the Clamps after use - steam clean as needed; remove mud, debris, and any other substances.
- Transport the unit(s) in a suitable container or by other safe means designed specifically for handling this type of equipment.

PARTS

Model T76519		
Item No.	Part Number	Description
1	T76519-01	CLAMP BODY TOP HALF
2	T76519-02	CLAMP BODY BOTTOM HALF
3	040387	SCREW, CAP, SOCKET HEAD 1-1/2"-6 THD X 5" LG
4	040388	WASHER, LOCK, SPLIT 1.534 ID X 2.159 OD
5	080144	STEEL HOIST RING 7/8-9 THD 4T
6	080145	1-1/2" BOLT TYPE BOW SHACKLE 17T

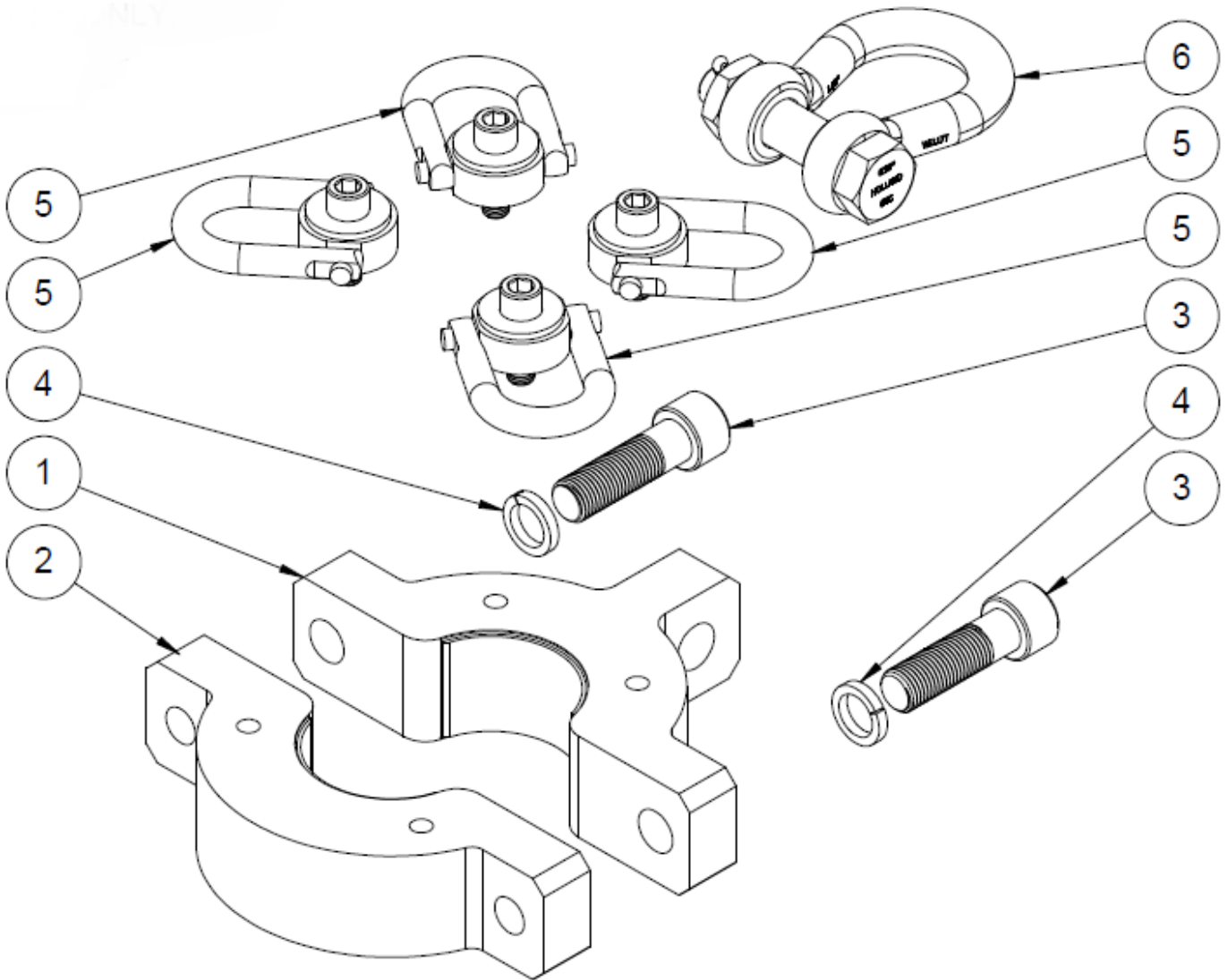


FIGURE 4 (5-7/8" CLAMP)

Model T76519-7.625

Item No.	Part Number	Description
1	T76519-7.625-01	CLAMP BODY TOP HALF
2	T76519-7.625-02	CLAMP BODY BOTTOM HALF
3	040387	SCREW, CAP, SOCKET HEAD 1-1/2"-6 THD X 5" LG
4	040388	WASHER, LOCK, SPLIT 1.534 ID X 2.159 OD
5	080144	STEEL HOIST RING 7/8-9 THD 4T (NOT SHOWN)
6	080145	1-1/2" BOLT TYPE BOW SHACKLE 17T

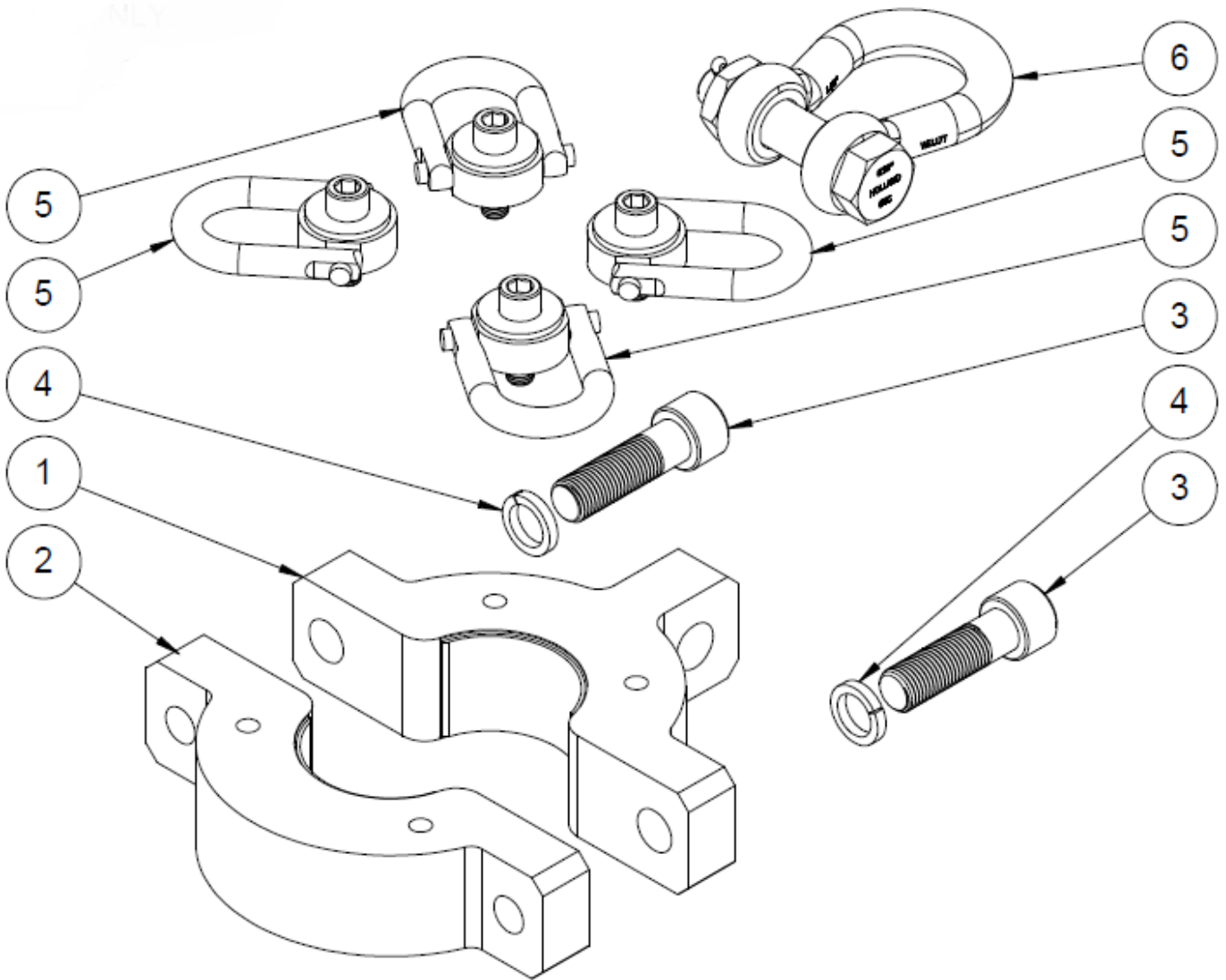


FIGURE 5 (7-5/8" CLAMP)

DIMENSIONS

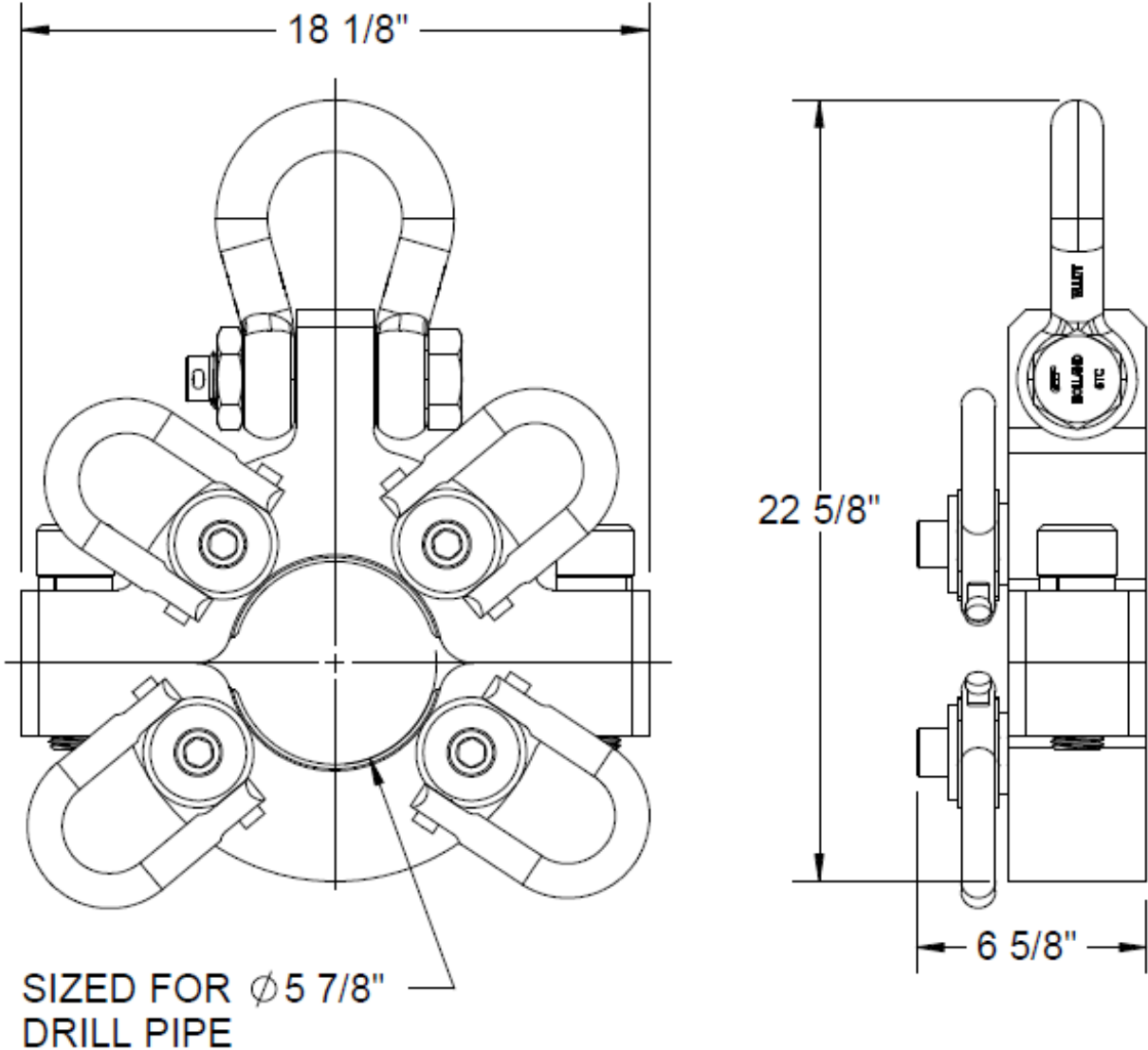


FIGURE 6 (5-7/8" CLAMP)

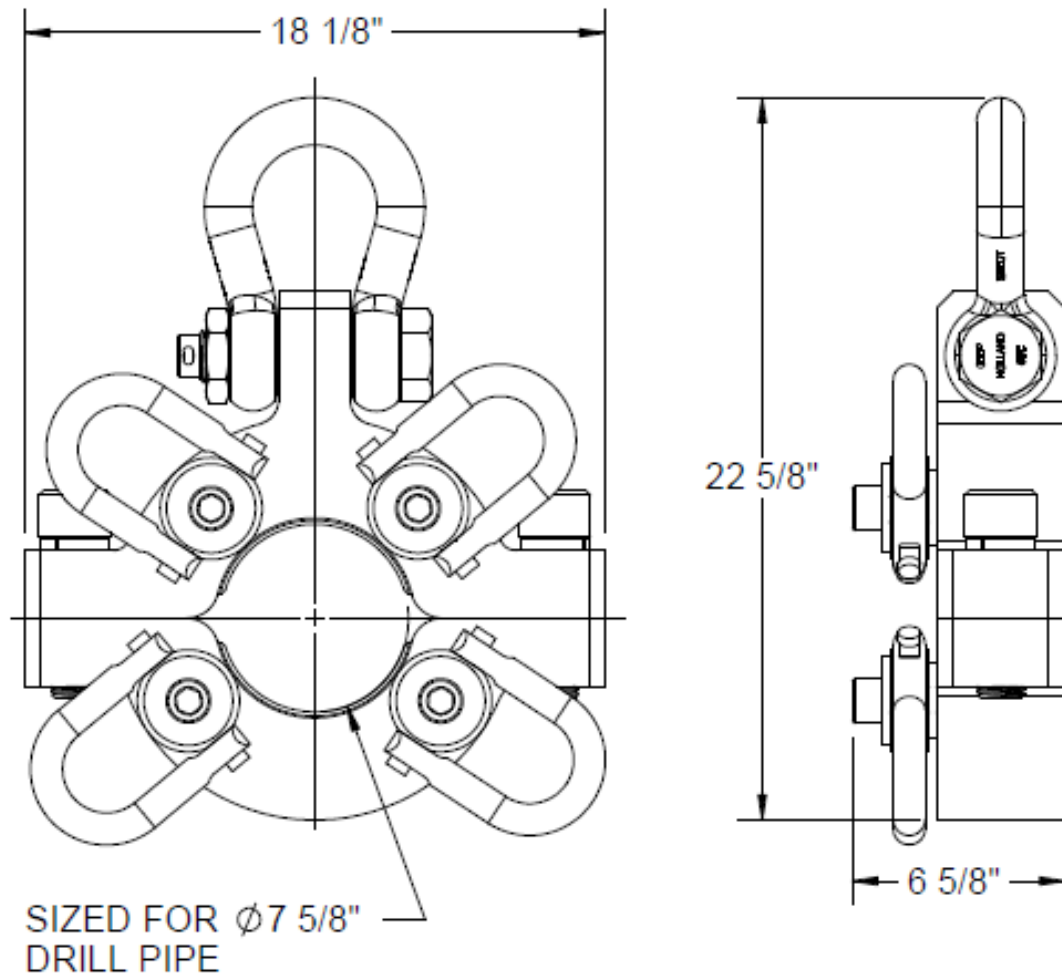


FIGURE 7 (7-5/8" CLAMP)

REFERENCE

Bolt Torque				Tightening Torque (ft lbs)	
Bolt Size	TPI	Proof Load (lbs)	Clamp Load (lbs)	Lubricated	Plain
1/4	20	3800	2850	6	12
5/16	18	6300	4725	12	25
3/8	16	9300	6975	22	44
7/16	14	12750	9563	35	70
1/2	13	17050	12788	53	107
9/16	12	21850	16388	77	154
5/8	11	27100	20325	106	212
3/4	10	40100	30075	188	376
7/8	9	55450	41588	303	606
1	8	72700	54525	454	909
1 1/8	7	91550	68663	644	1287
1 1/4	7	120000	90000	938	1875
1 3/8	6	138600	103950	1191	2382
1 1/2	6	168600	126450	1581	3161

The suggested tightening torque values on this page are presented only as a guide. Many factors affect what torque value is optimal in any application including: lubrication texture of surface, condition of threads, type of material, corrosion and other debris that may be present. Users are responsible for and urged to test these recommendations in the actual application conditions and with a calibrated torque wrench.

Every Company has to have a Toolbox.

At Texas International Oilfield Tools,

*We provide the tools to fuel the
World!*



The terms VARCO, VARCO-BJ, and BJ are trademarks of Varco I/P, Inc., National Oilwell Varco, L.P., or their affiliates. Texas International Oilfield Tools is not an authorized distributor of any Varco I/P or NATIONAL OILWELL VARCO product. Texas International Oilfield Tools is not affiliated with Varco I/P, Inc., National Oilwell Varco, L.P., or their affiliates. Varco I/P, Inc., National Oilwell Varco, L.P., and their affiliates do not endorse any Texas International Oilfield Tools' products or replacement parts.